

VICTORY LOVES PREPARATION

We have been watching the news with such a degree of sadness surrounding the war that is taking place in Ukraine! The feeling of helplessness is overwhelming as we viewed video clips of children and women farewelling their male relatives, as Ukrainian men were banned from leaving the country and urged to join the army as Russian troops advanced on Kyiv.



Freedom is a seven-letter word that has so many different meanings and perspectives tātou mā. Whether we are focussed regionally, on our nation's political climate, or globally, let us all remain prayerful/karakia-minded as we will a solution for our brothers and sisters around the world.

Turou Hawaiiiki,
Matua Antz

He Pūke Marāamā

Te Kura Kaupapa Māori o Tuia te Matangi
Kia Wairua Māori. Kia Tangata Māori. Kia Reo Māori. Ana te Hā!
Te Wāhanga 1, Wiki 5 – Rāhina 28 Huitanguru 2022



'Teitei ake te maunga māro hoki te kake. Rawe rā te tirohanga i te mutunga.' Though the climb may be hard, the view is magnificent/ without comparison...

"...they committed themselves to the proposition that, I want to speak this language, I want this language to survive, I want my children to speak this language..." Sir Timoti Karetu.

The last fortnight has seen our media coverage continue to focus on the Capital's government gardens protest, the eventuating spike in Covid cases throughout Aotearoa, and of course the devastating war that is amid in Ukraine at this time. Taranaki Whānau and Ngāti Toa Rangatira have received overwhelming support from our National Iwi Chairs Forum in beseeching all remaining & steadfast protestors to be purposeful in their actions while at all times respecting the mana and whenua of the haukainga. I am reminded that historically, Ngai Māori has been and will continue to be a people of purpose, resilience, and foresight in creating a tomorrow for all our people that affords our progeny a legacy of self-determination and tino rangatiratanga. May we reach a united resolve soon that allows us to re-focus on that pivotal goal again.

I want to acknowledge our whānau, for taking precautions and placing our tamariki and whānau at the forefront of care and isolation during the start of our nation's Covid spike. It has been confirmed that the spike was fore-scheduled for mid-March but has started its ascent earlier than all predictions. We received some resources from Te Pūtahitanga which have been given out to reward some of our ākonga in their contributions to the successful start of our 2022 year. Te Pūtahitanga has informed us that at the end of this month we can expect a care package for each of our tamariki with some 'covid-essentials' so we look forward to receiving these resources and passing them on.

Waa t ak'a

Hui whānau @kura 6pm-7.30pm	22/3, 24/5, 21/6, 26/7, 23/8, 27/9, 22/11
Hui Poari @kura 4.30pm-6.30pm	21/3, 23/5, 20/6, 27/7, 22/8, 26/9, 22/11, 18/12
Pouako Only Days	17 & 18 March
Kia Wairua Māori - Ana te Hā! T1	Tues 12 April
Term 1 last day	Thur 14 April
Arahanga – Easter weekend	15-18/19 April (Ed.obs)
Term 2 starts	Mon 2 May, 8.40am
T2 2022, Pōwhiri	Tues 3 May, 10am
NMKR Nayland College	Fri 27 May
Te Taihū Te Hurihanganui	Fri 3 June
Education Symposium	
Queens Birthday long wknd	Mon 6 June
Matariki 1st PH observation	Fri 24 June
Huritau Tuangāhuru	Mon 4 – Fri 8 July
Kia Tangata Māori - Ana te Hā! T2	Tues 5 July
Term 2 last day	Fri 8 July
Term 3 starts	Mon 25 July, 8.40am
T3 2022, Pōwhiri	Tues 26 July, 10am
Mātua-Akonga-Pouako	Tues 13 & Wed 14 Sept
Goals Review hui	
Kia Reo Māori - Ana te Hā! T3	Tues 27 September
Term 3 last day	Fri 30 September
Term 4 starts	Mon 17 Oct, 8.40am
T4 2022, Pōwhiri	Tues 18 Oct, 10am
Labour long wknd	Mon 24 Oct
Ana te Hā! He Rangī WHAKANUI	Thurs 8 Dec, 11am
Term 4 last day	Wed 14 December

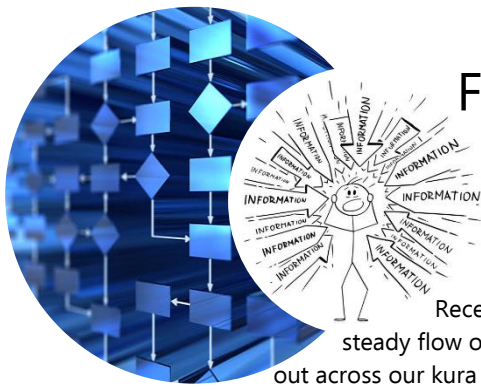
We aim to update this wātaka for every fortnightly edition.
These dates can also be found on the kura website



Te Pūtahitanga

Māu te ara, kia ora ai te whānau.

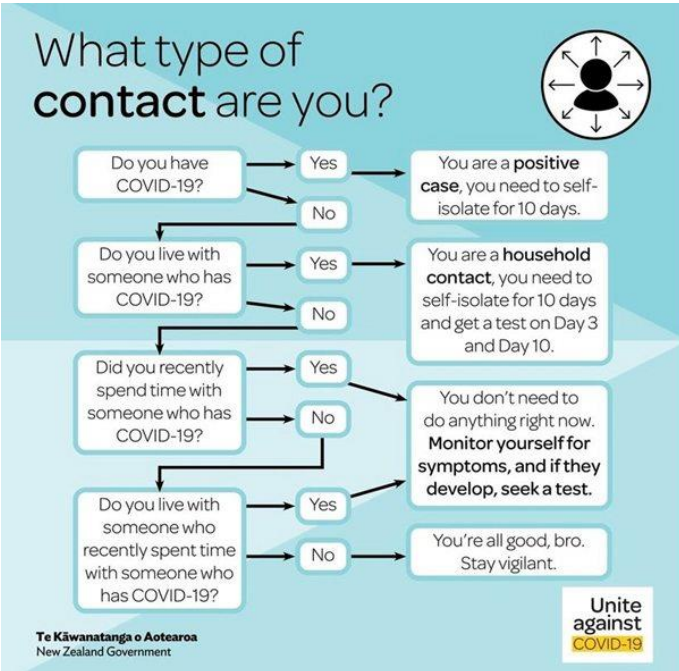
"Your pathways empower whānau to thrive"



Flowcharts Galore... and for what??

Recently there has been a steady flow of information coming out across our kura communication tools about 'Phases', 'traffic lights', 'if-you-have...' scenarios and the list goes on... and unfortunately will most probably continue, due to the rapidly changing needs, discoveries, misunderstandings, of our respective Education departments.

Just as you are receiving a hopefully 'easy-to-read' memo about the various flowcharts and how best to interpret this overload of information, we commit to trying to keep it understandable, simple, and straight to the point for our whānau!



This morning is no different as I received this email outlining those very questions, "what does this all mean?" I note that there is a lot of conflicting messaging and confusion at the moment regarding the isolation of household contacts. I certainly know I have been trying to understand it! Our MoE advisors have worked with the PHU and Medical Officer this morning to confirm the following:

- If someone tests positive, they isolate for 10 days from onset of symptoms or if asymptomatic from the date of the test. They do not require a further test before self-releasing.
- All household contacts linked to the positive case isolate for the same 10-day period as the case
- Household contacts need to test on the positive cases' Day 3 and Day 10
- If a household contact has a negative day 3 test but then develops symptoms before 10 days, they should get a test when they develop symptoms, not wait until Day 10
- Cases and household contacts can self-release after 10 days if asymptomatic
- All household contacts continue their isolation period from the first case in the house. It doesn't reset with subsequent cases, and they are okay to be released once the first case

finishes 10 days of isolation provided the contacts themselves are asymptomatic.

- At any time that a household contact tests positive, at Day 3 for instance, or Day 10, their 10 days start from the date their symptoms started or if they are asymptomatic 10 days from the date of their test. They re-set but no one else in the household needs to.

If at any time you are not sure or confused by information that we send out please contact Whaea Janis in the Tari. She will go through it with you, and if there are still questions, we'll help find further sources to get the answers.

Paper Mache

Our amazing Whaea Sweety is doing Paper mache with our tamariki and needs as much newspaper as she can get her hands on. Therefore, whānau can you please search in your homes and if you find a stash or know of who may have a bundle not being used, please drop it into the kura.



Ngā manaakitanga!

KOHI PUUTEA

KAUMOANA
 Kohi Puutea
 04-03-2022

\$1 Wai
Water

\$2 Tootiti
Sausage sizzle

\$3 Purini
Waffles

Me tuku te katoa o ngaa moni me ngaa pepa ki roto i te tari i mua i te
Taite 03/03/2022
Whakamahia te moni tika
 Ngaa Manaakitanga
 Kaumoana